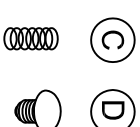
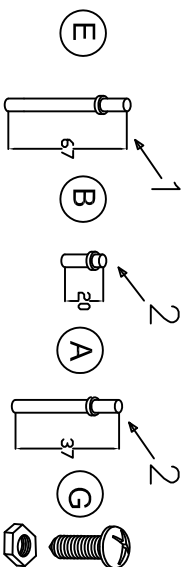
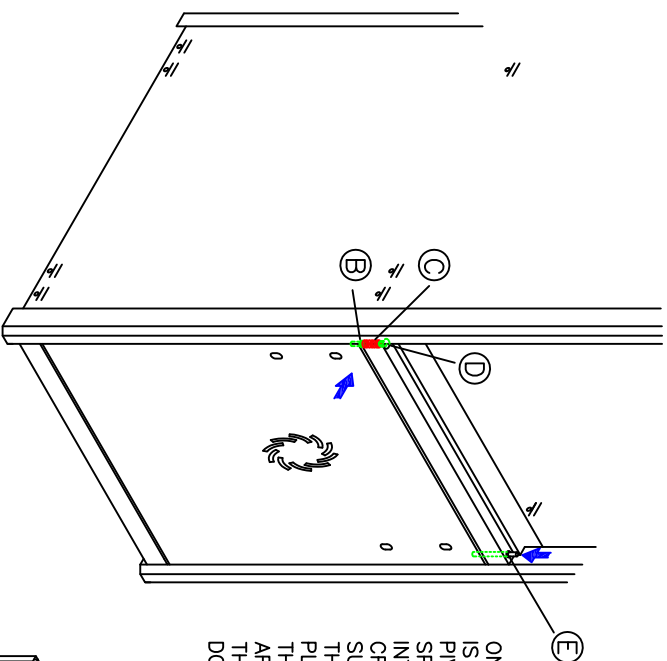
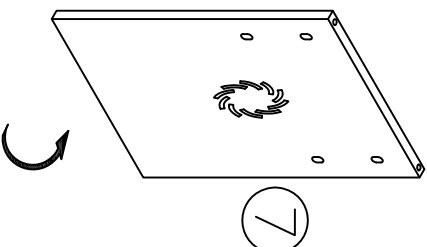
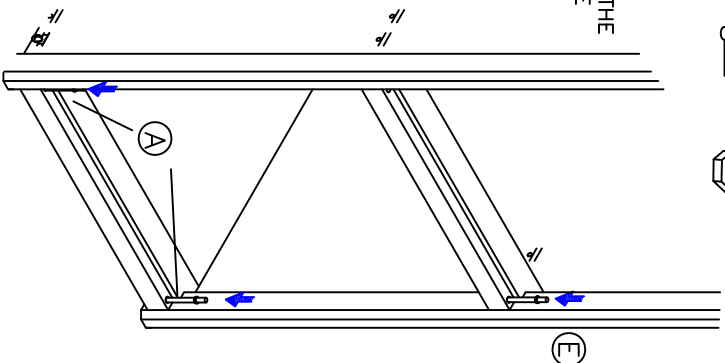


ASSEMBLING INSTRUCTIONS GYM SERIE

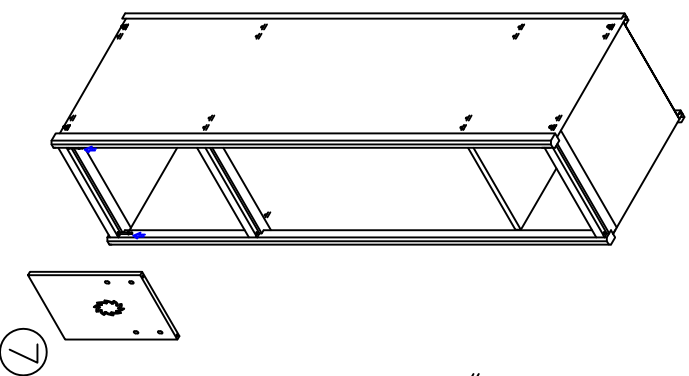
TO DO BEFORE FIXING THE DOORS (6TH STEP)



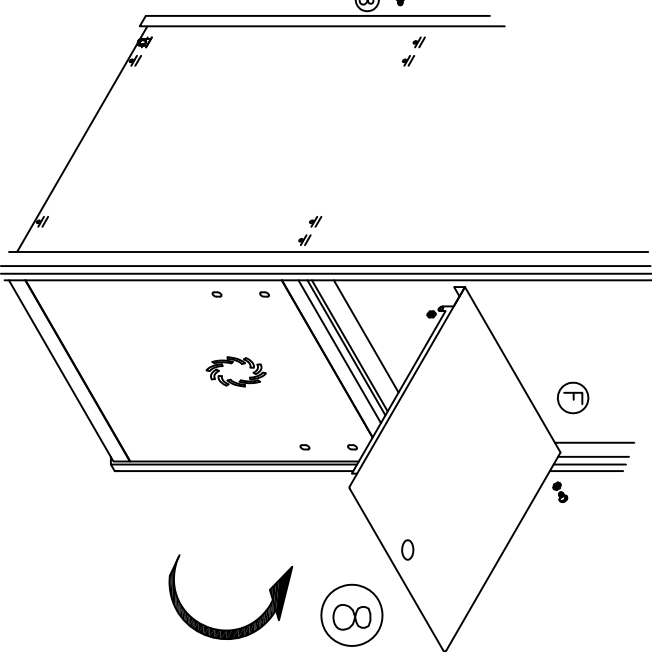
AT FIRST YOU HAVE TO PLACE THE PIVOTS DOWNSIDE AND JOIN THE FRONT PART ⑦ WITH FOLDINGS



ONCE THE FRONT PART IS FIXED, PLACE THE PIVOT ③ AND THE SPRING ④ AT THE INTERIOR PART OF THE CROSSBAR TO THE SUPERIOR LEFT SIDE OF THE FRONT PART AND PLACE THE DRIVE PIN ⑤ THROUGH THE EXTERIOR. AFTERWARDS, PLACE THE BOLT ⑥ FOR THE DOORS.



JOIN THE REMOVABLE TOP COVER ⑧ WITH THE FOLDINGS POINTING DOWNWARDS: UNITED WITH THE SCREWS ⑨ IF THERE ARE RIVETS ON YOUR DISPOSAL, SUBSTITUTE THE SCREWS BY THE MENTIONNED RIVETS.



CONTINUE WITH THE 6TH STEP FIXING THE DOOR.

